



simonyi üzlet- és gazdaságfejlesztési központ

PÉCSI KÖZGÁZ

# Vállalkozó egyetem. Globális tantermek a vállalkozóiség oktatás szolgálatában

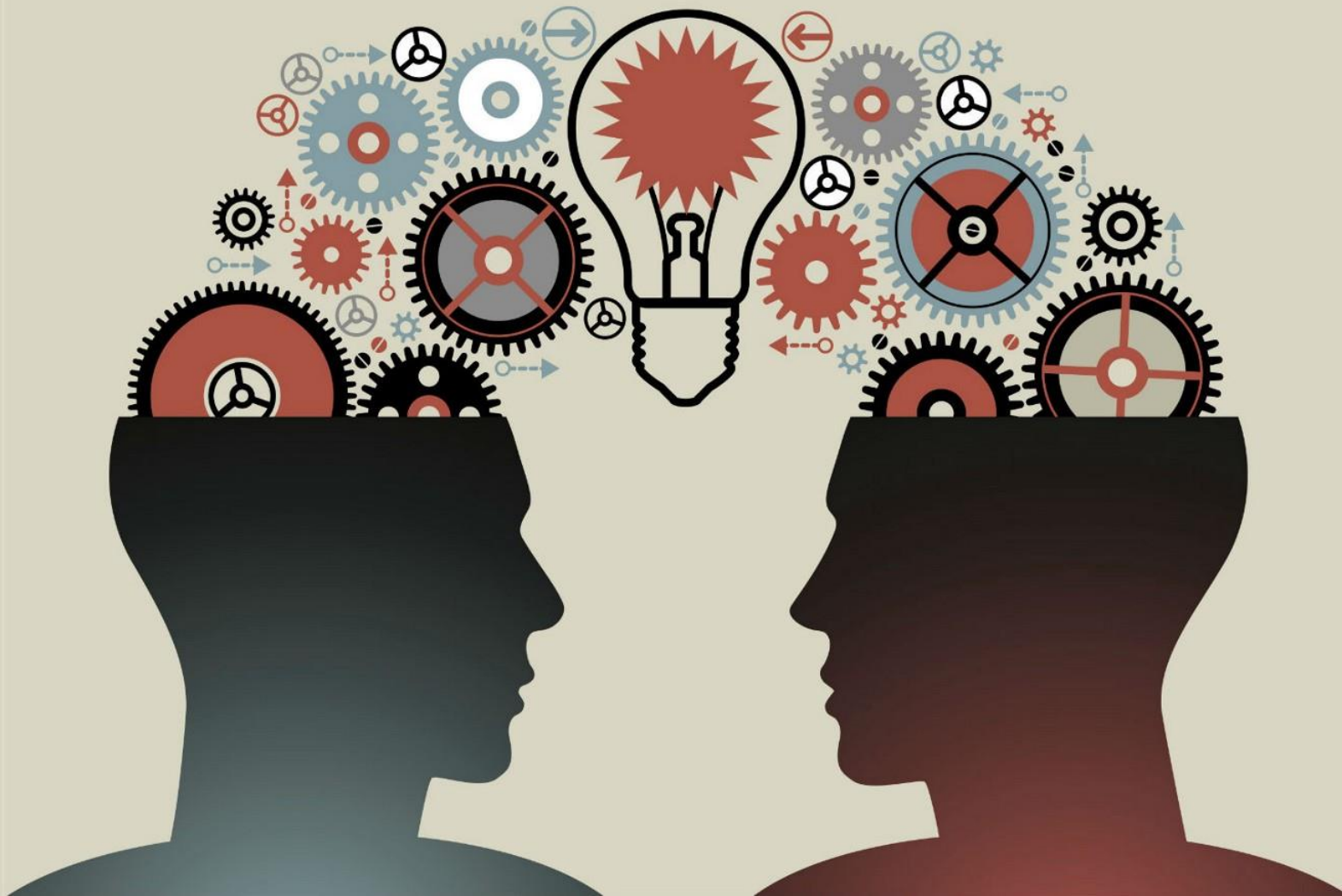


PÉCSI TUDOMÁNYEGYETEM  
UNIVERSITY OF PÉCS



# Vállalkozóiség feltérképezése, felderítése





# Kreativitás, inspiráció, showcase







ALKOTÓK

# INSPIRÁCIÓ <http://inspiration.pte.hu/> Pécsiközgáz-Simonyi Platform





CERTIFICATE



**CERTIFICATE  
ENTREPRENEURSHIP**

Certificate program  
**LEARN TO BE AN ENTREPRENEUR**

**SHORT TERM (2 SEMESTERS) PROGRAMM  
WITH STRONG PRACTICE ORIENTATION**

**5 COURSES IN ENGLISH**

**CERTIFICATE IS AWARDED IN COOPERATION  
OHIO UNIVERSITY (US)**

**OPEN TO ALL UP STUDENTS AND FREE WITH  
THE UP CAMPUS CREDITS  
(NON-UP STUDENTS PAY COURSE FEES)**

**APPLICATION: IN NEPTUN**  
**APPLICATION DEADLINE:  
15 September**  
**FURTHER INFORMATION:  
SIMONYIBEDC@KTK.PTE.HU AND AT HITTI**



Certificate in  
**Data Science  
AND ENTREPRENEURSHIP**

The Simonffy BEDC in collaboration with the Big Data Research Center of the Szechenyi Research Center offers this unique one-year Certificate in Data Science and Entrepreneurship program, which truly is an interdisciplinary business-technology program. It is ideal for students eager to bring data science into effective use in business.

**Data science**

Aims at deriving actionable insights from large amounts of data, such as theories and models for data integration, data cleaning, data mining, process mining, business analytics architectures.

**Entrepreneurship**

Involves the successful development of new business models and entrepreneurial ventures exploiting new algorithms, models, theories, tools, and project solutions in the field of entrepreneurship, defining business models, fueling creativity and fostering open innovation. Data Scientists are able to analyze massive amounts of data, see patterns in it and create new products or services which are useful for business.

**This requires:**

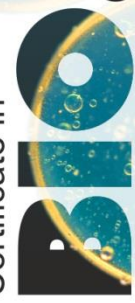
- Technical expertise: you are able to analyze massive amounts of data, see patterns and convert this to new products or services.
- Curiosity: you desire to discover and model a problem down to a clear set of concrete hypotheses that can be tested).
- Creativity: you desire to look at a problem in different ways and find novel solutions.
- Communication skills: you are able to communicate effectively with different partners and divers aspects of data science. You know how to use data to tell a story.
- Social skills: you are able to collaborate with others, with similar and different backgrounds to tackle challenging problems.
- Interest in/knowledge of Entrepreneurship: you desire to develop your entrepreneurial ideas.

This is a two semester program, which starts with two entrepreneurship courses (Introduction to Entrepreneurship and Entrepreneurial Consulting) and finishes with an elective business course and a biotech specific courses. All together you have to complete 5 courses 3 credit each to acquire 15 credits all together. Enroll into the program through Neptun or contact us if you have any questions at [simonyibedc@kkt.pte.hu](mailto:simonyibedc@kkt.pte.hu).



**APPLICATION DEADLINE:  
15 September**

Certificate in



entrepreneurship

**INTRODUCTION**

The Simonffy BEDC in collaboration with the Biotechnology Research Group of the Szentágotthay János Research Center offers this unique one-year Certificate in BioEntrepreneurship program, which truly is an interdisciplinary business-technology-analytics program. It is ideal for students eager to bring biotechnology into effective use in business.

Merging science and business is at the center of the BioEntrepreneurship program. Students who want to become part of the development and commercialization of science must first understand the running of a biotechnology organization. To acquire this experience and knowledge, students can earn a Certificate in BioEntrepreneurship. This certificate offers the opportunity to learn critical aspects of biotechnology product development, including how to create a new enterprise, finance, marketing, and other areas of commercialization. This certificate is ideal for students planning to engage in the enterprise of biotechnology beyond the science.

**ON COMPLETION OF THE CERTIFICATE  
STUDENTS WILL BE ABLE TO:**

- Apply the core principles of science and business to the biotech industry
- Fluently speak the language of science and business
- Ask the right questions of scientists and business people on critical issues facing their organizations
- Identify, evaluate, and act on scientific and business opportunities that arise in the field.
- Formulate and implement strategies within the interdisciplinary functional areas of the biotech enterprise
- Define and expand their professional role in a biotechnology enterprise through completion of a variety of required and elective courses
- Demonstrate principles of human inter-relationships to research, design and development activities.

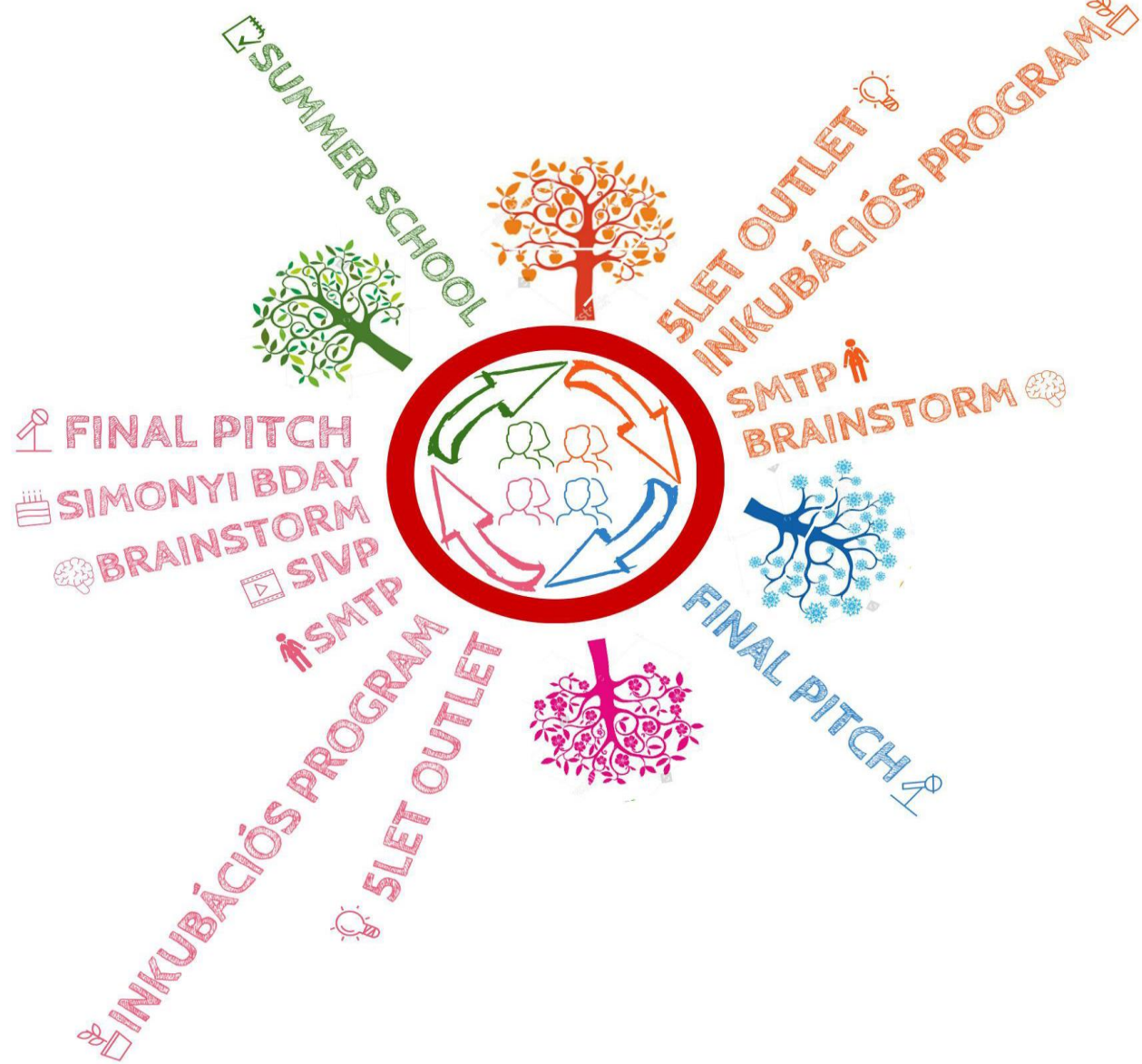
This is a two semester program, which starts with two entrepreneurship courses (Introduction to Entrepreneurship and Entrepreneurial Consulting) and finishes with an elective business course and a biotech specific courses. All together you have to complete 5 courses 3 credit each to acquire 15 credits all together. Enroll into the program through Neptun or contact us if you have any questions at [simonyibedc@kkt.pte.hu](mailto:simonyibedc@kkt.pte.hu).



**APPLICATION DEADLINE:  
15 September**



Vállalkozóiskola oktatás  
Certificate programok



# Vállalkozó PTE







# 5LET OUT LET

ÖTLETVERSENY

Ötletverseny, inkubációs program, globális tanterem



PÉCSIKÖZGÁZ  
ahonnan a barrier indul





## Global classroom for student entrepreneurs

GLOBAL INCUBATION PLATFORM

Ötletverseny, inkubációs program, globális tanterem,  
IVP <http://netmib.pte.hu/>







[HOME](#)

[ABOUT](#) ▾

[APPLY](#) ▾

[CONTACT](#)

[LOGIN](#)

## INTERNATIONAL VIDEO PITCH COMPETITION

Welcome to the 2017 International Video Pitch Competition!

WINNERS 2017

IVP <http://ivpitch.pte.hu/>





Community based entrepreneurship

capacity development

GET STARTED 



## FEATURED PROJECTS



# Work in Progress: CF, Hiventures







# Simonyi BEDC in Numbers 2017 tavasz



# Köszönjük a figyelmet!

Várjuk a kérdéseket



**PÉCSIKÖZGÁZ**  
*ahonnan a karrier indul*